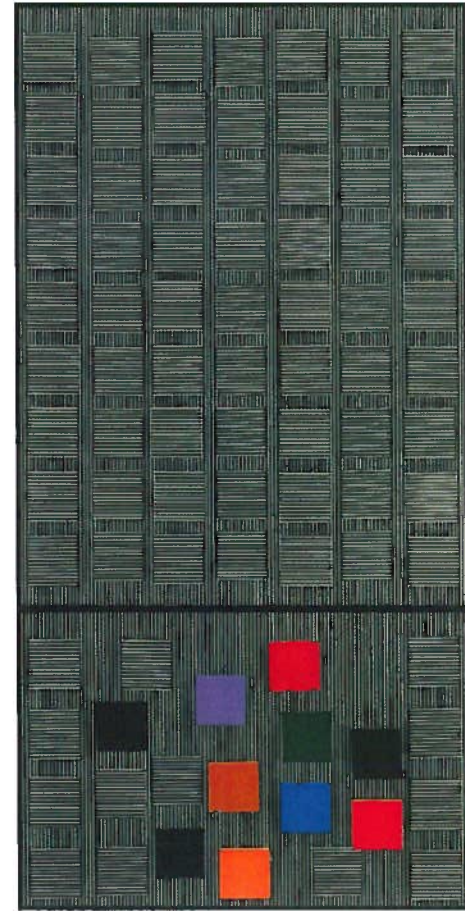
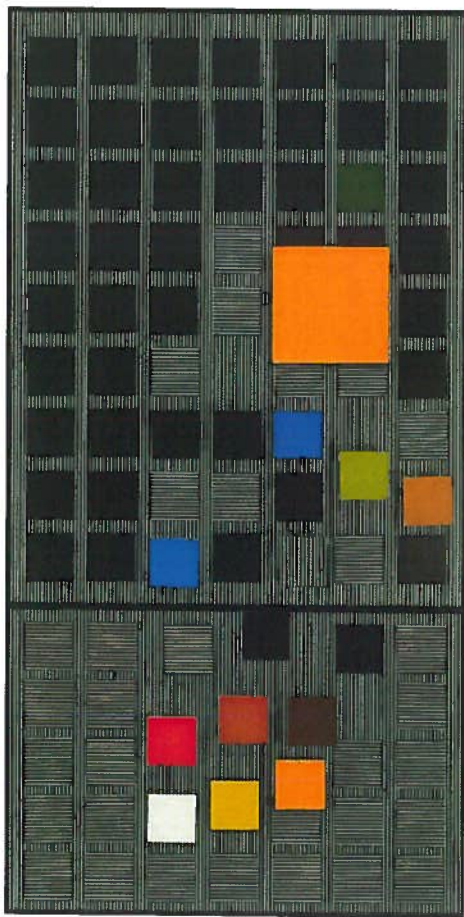


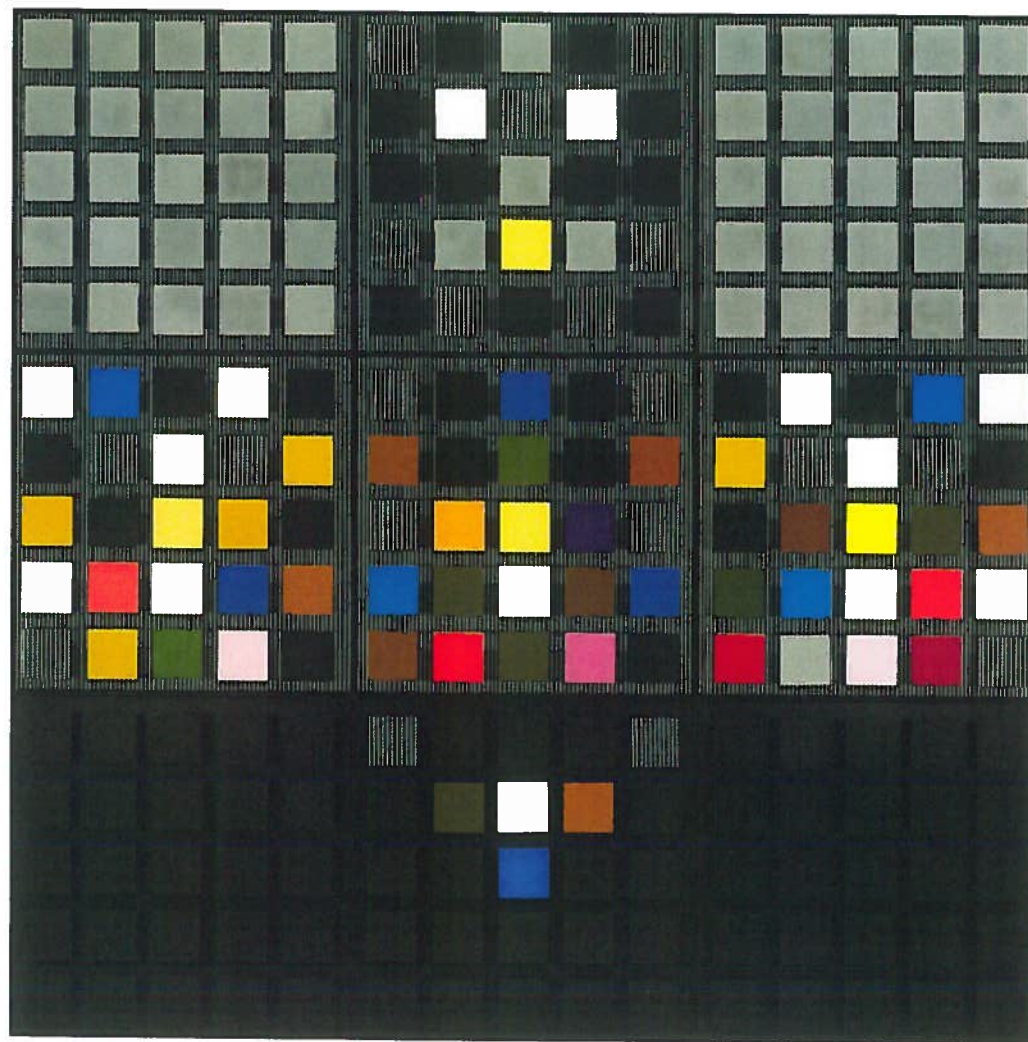
EL CUADRADO AUYAMA, 2003
150 x 75 x 15 cm



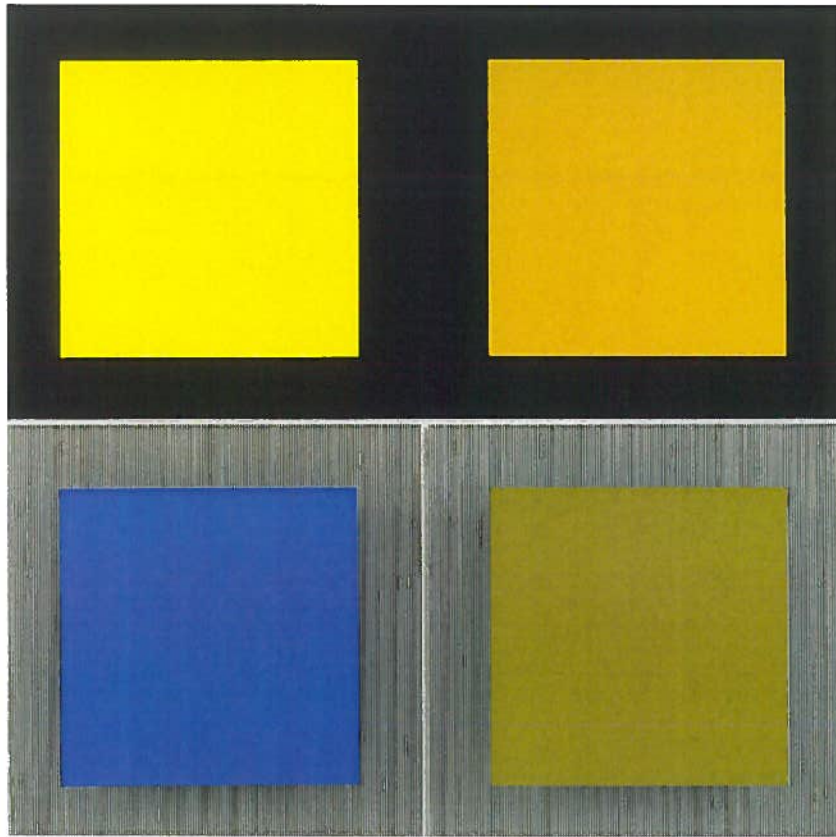
COLOR ABAJO, 2002
150 x 75 x 15 cm



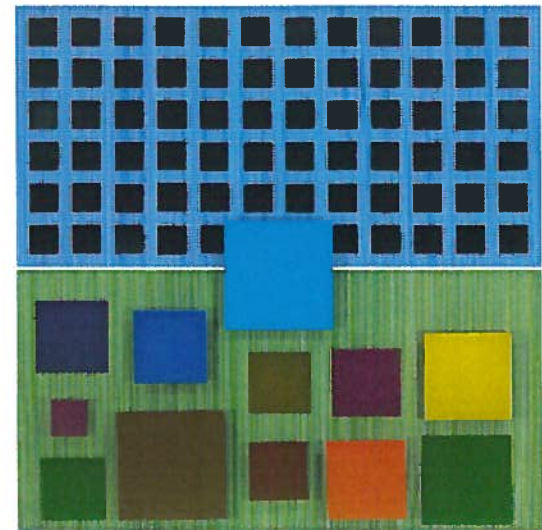
GRAN NARANJA SUPERIOR, 2000
150 x 75 x 15 cm



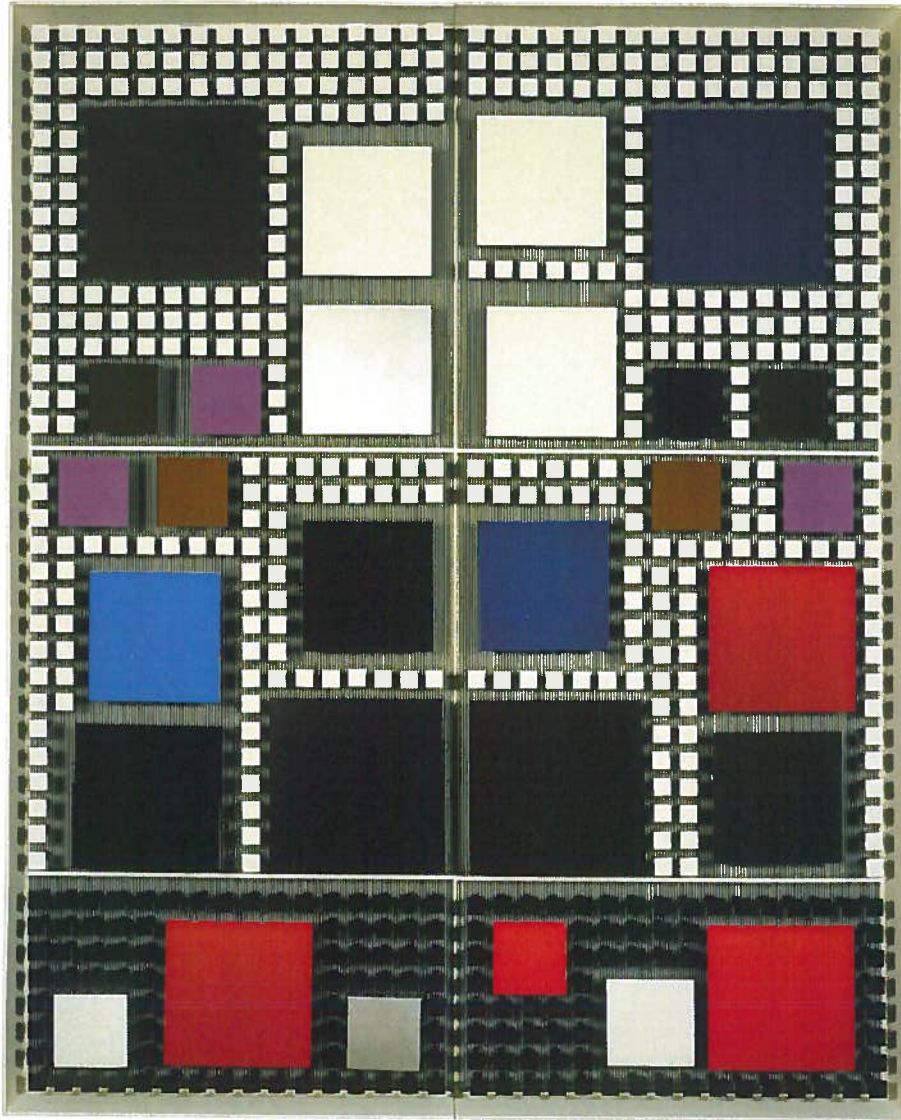
SIN TÍTULO (Ambivalencia en el Espacio nº 26), 1981
170 X 170 X 15 cm



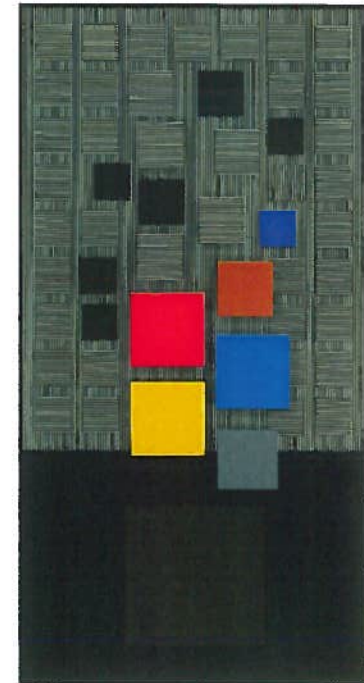
MARICHE 1, 1997
203 x 203 x 15 cm



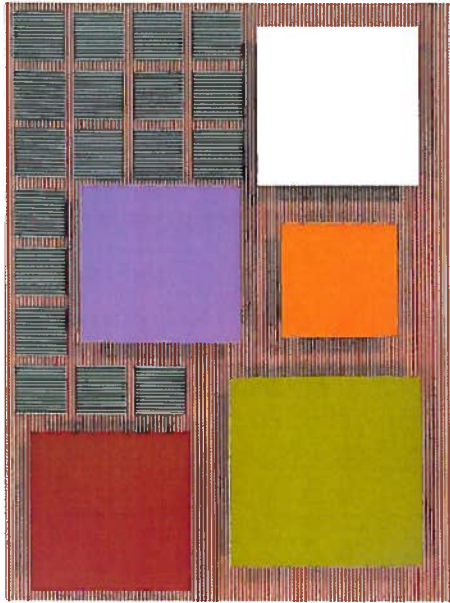
GRAN CUADRADO COBALTO CENTRAL, 2003
130 x 130 x 14 cm



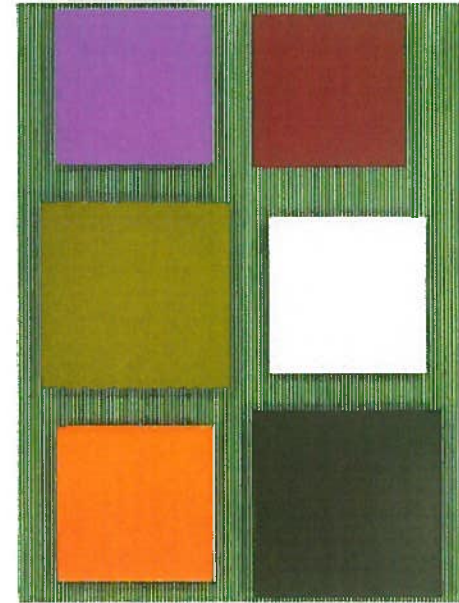
AMBIVALENCIA NEW YORK F, 1984
260 x 209 x 16 cm



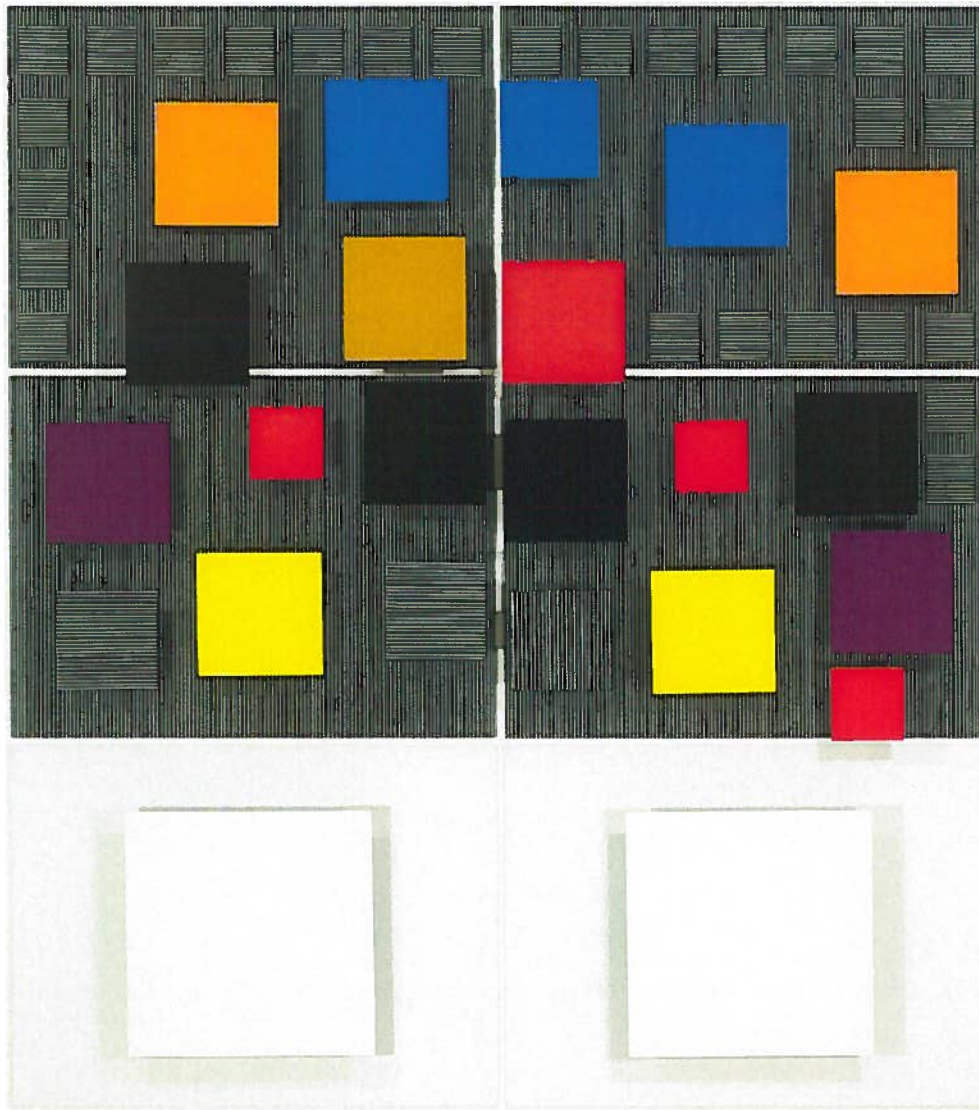
VERDACCIO INFERIOR, 2000
152 x 77 x 14,5 cm



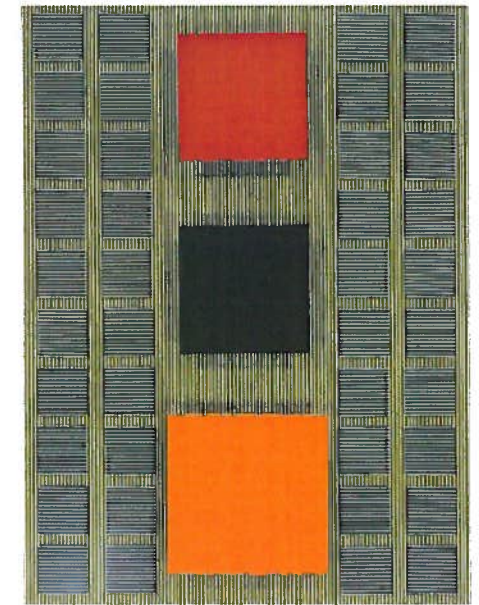
BLANCO DOMINANTE, 2003
150 x 75 x 15 cm



VERDE PREFERENTE, 2003
150 x 75 x 15 cm

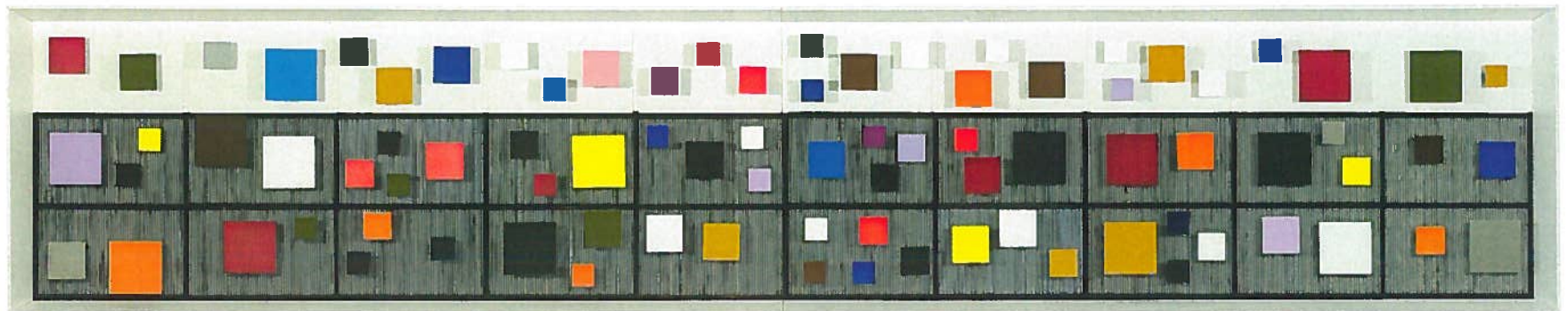
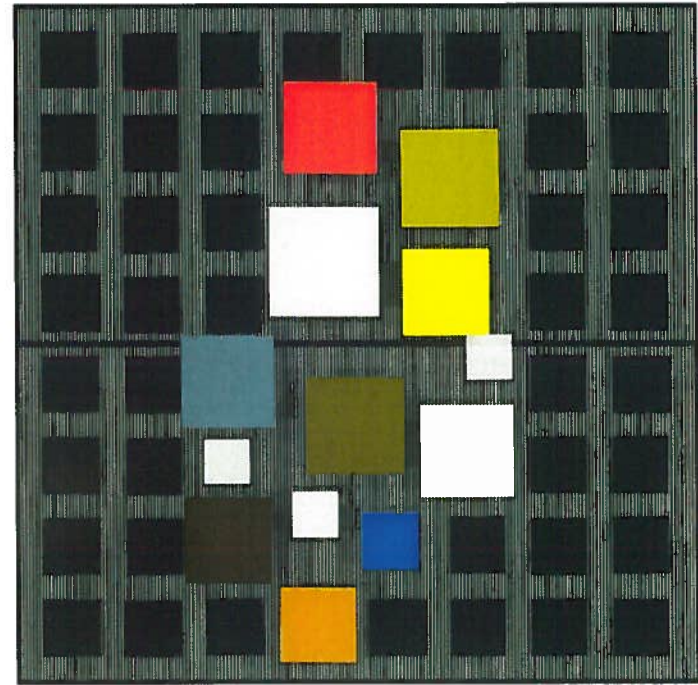


AMBIVALENCIA OCUMARE, 1990
184 x 164 x 17 cm

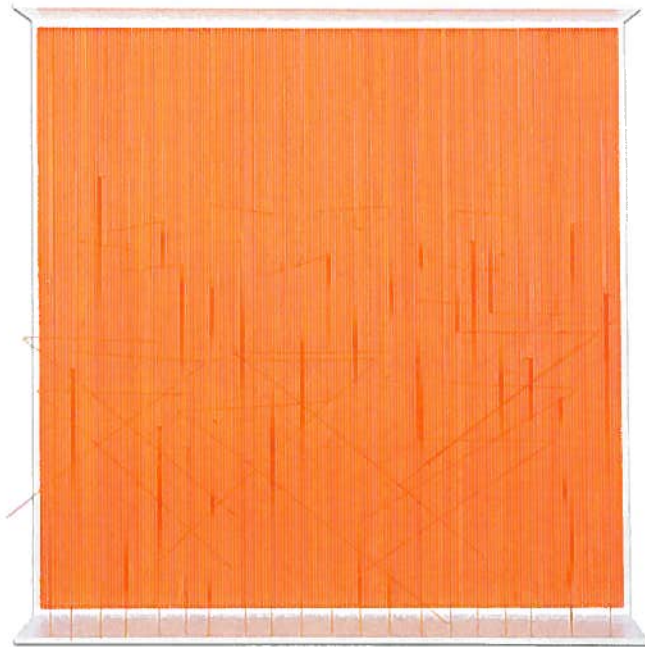


OLIVA, 2003
150 x 75 x 15 cm

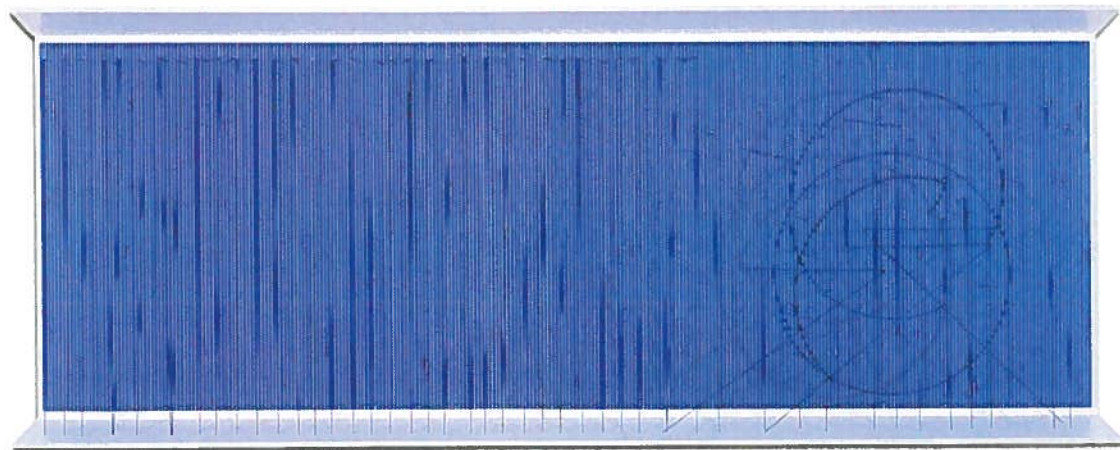
COLOR CENTRAL, 2002
122 x 122 x 15 cm



SIN TÍTULO (Gran Maqueta Capitanía de Puertos de Nueva York), finales 70
56,5 x 283,5 x 12,5 cm



ZIGZAGS VIBRANTES, 2004
92 x 90 x 14 cm



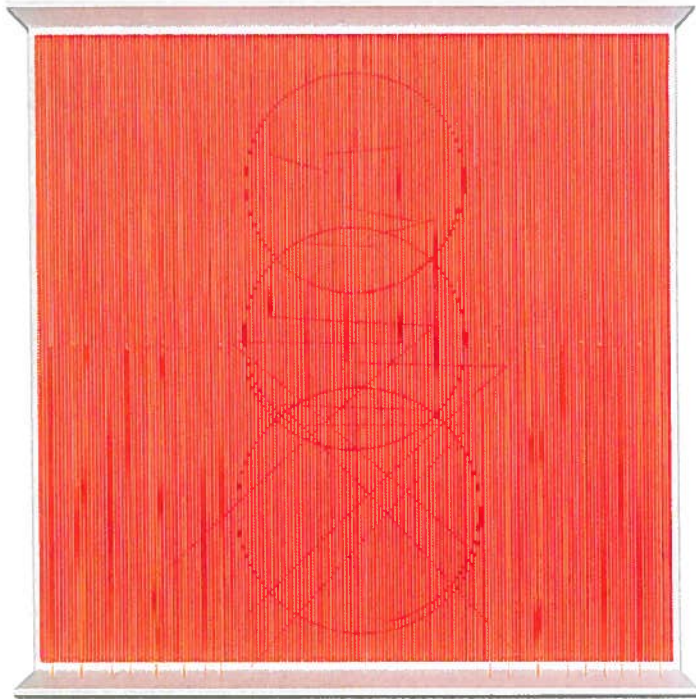
ESCRITURA AZUL, 2004
57 x 145 x 13 cm



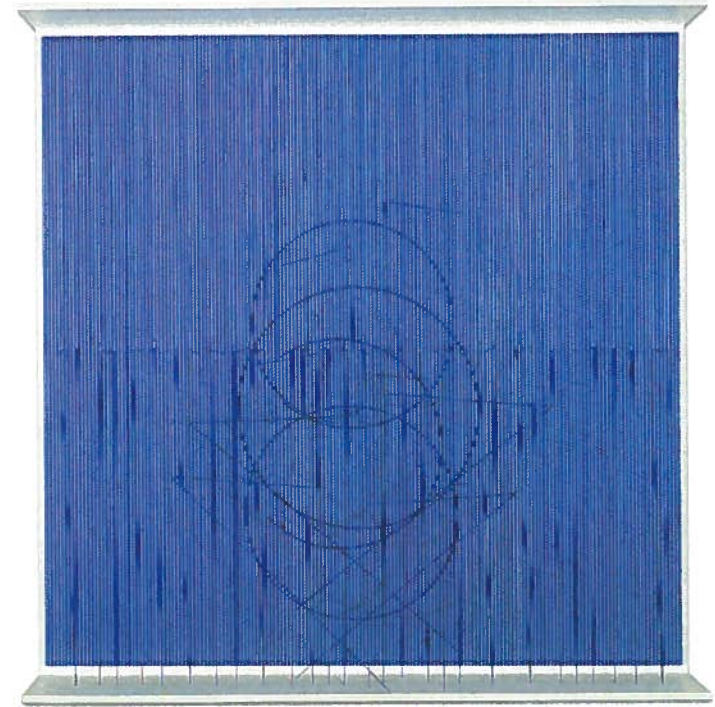
VIOLETA SOBRE VIOLETA, 2000
102 x 102 x 15 cm



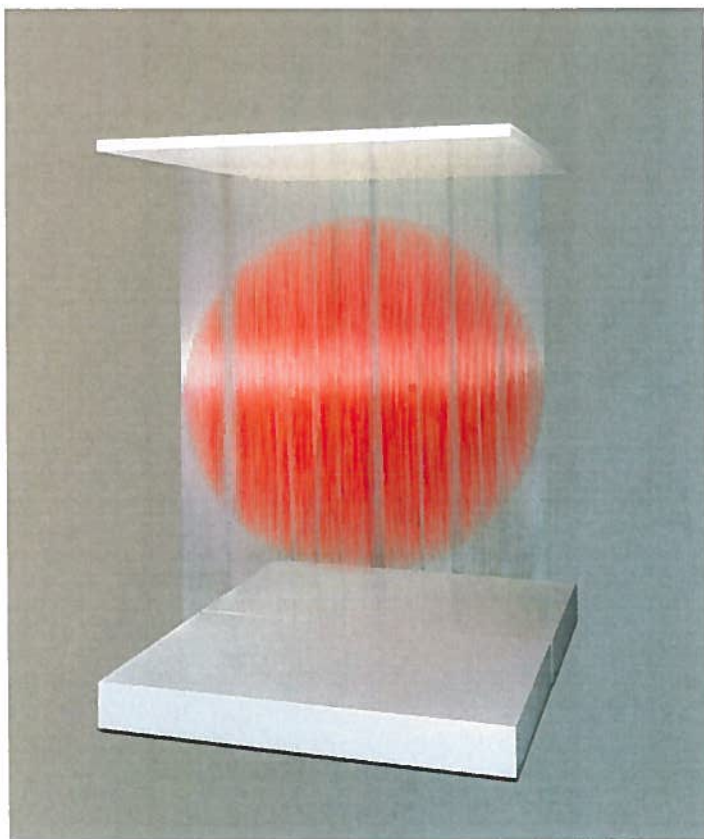
ESCRITURA OLIVA, 2004
92 x 90 x 14 cm



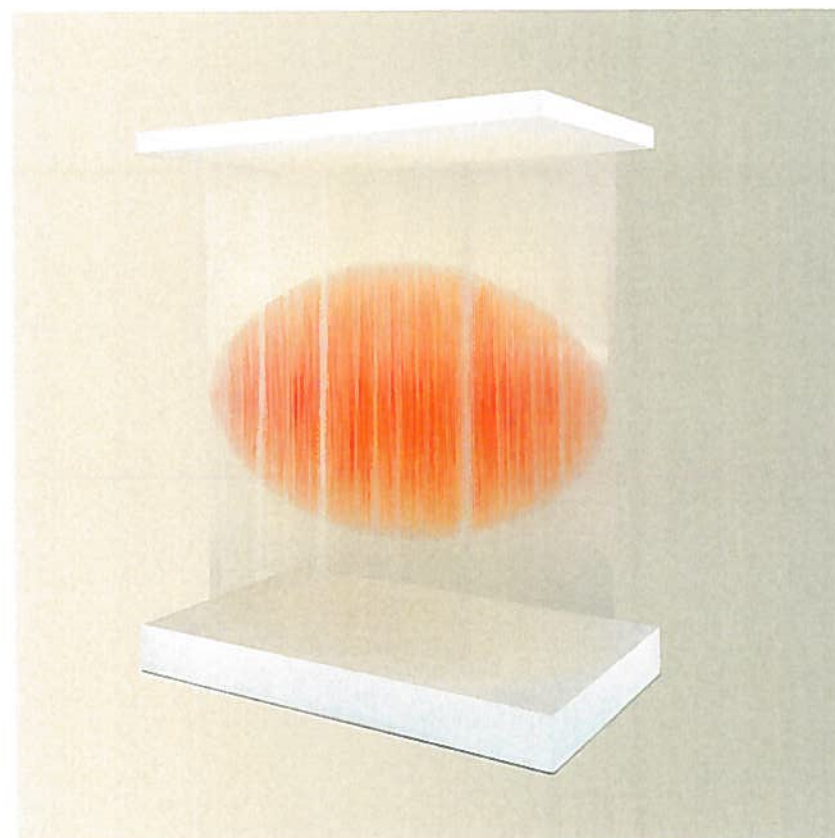
ESCRITURA ROJA, 2004
92 x 90 x 14 cm



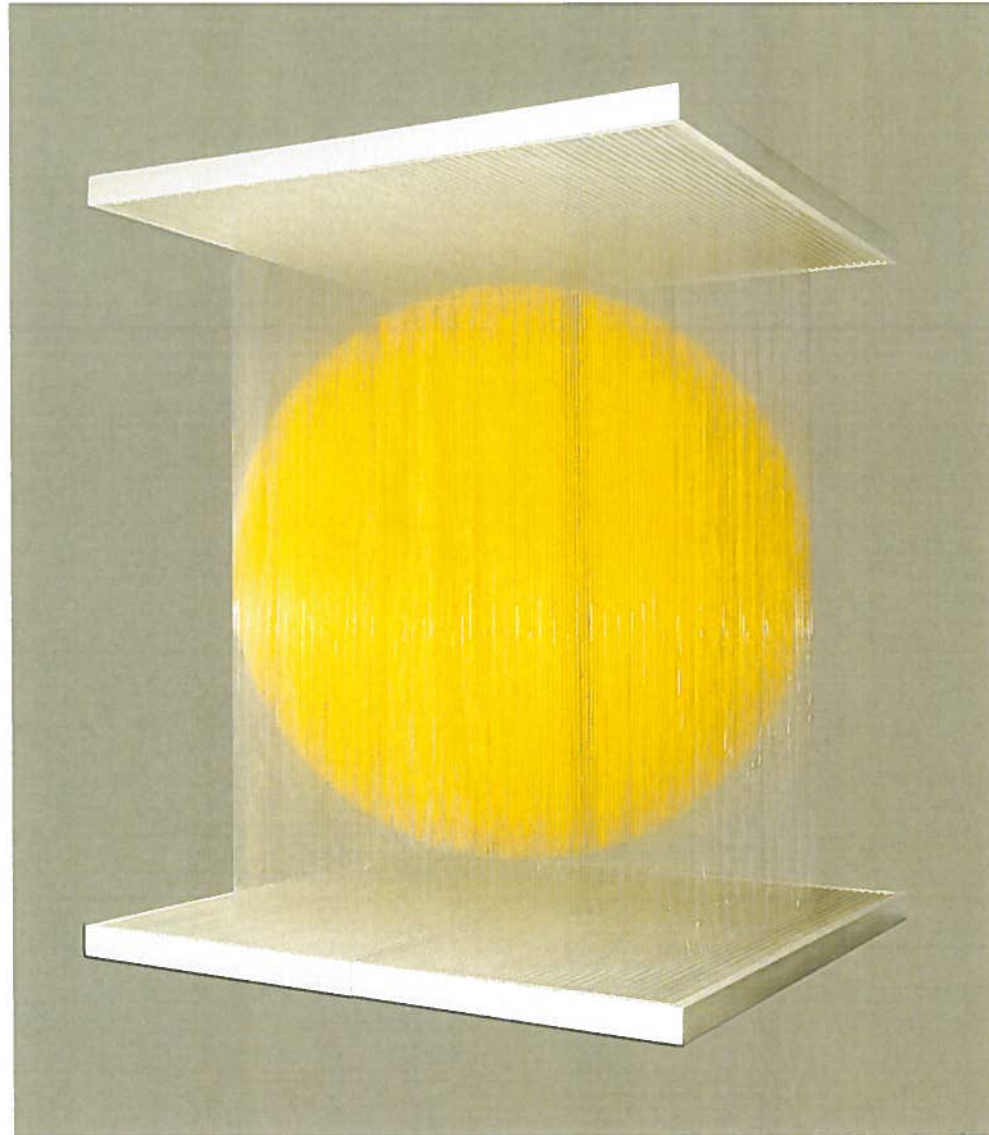
CURVAS Y VIBRACIÓN, 2004
92 x 90 x 14 cm



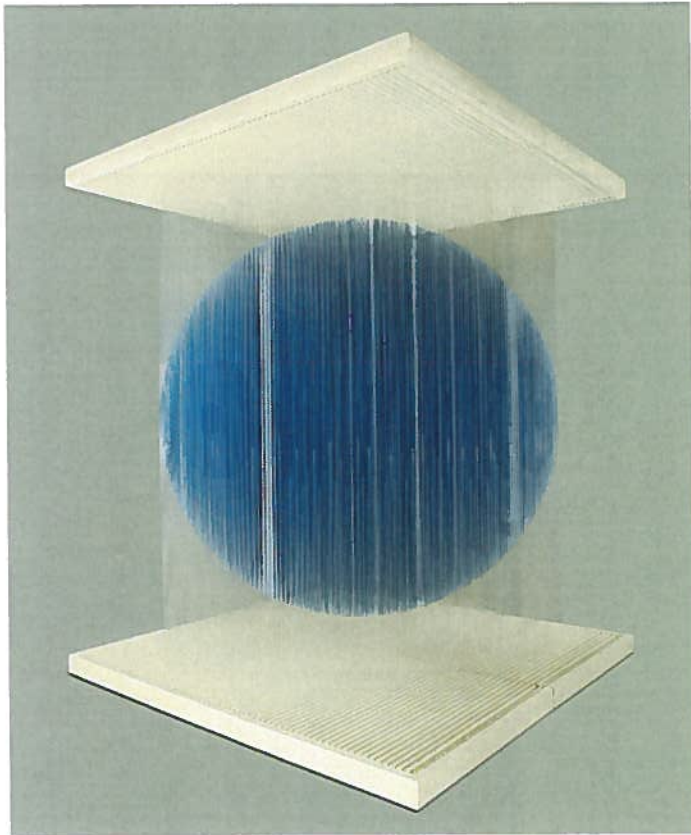
SPHÈRE CONCORDE, 1996
257 x 184 x 184 cm



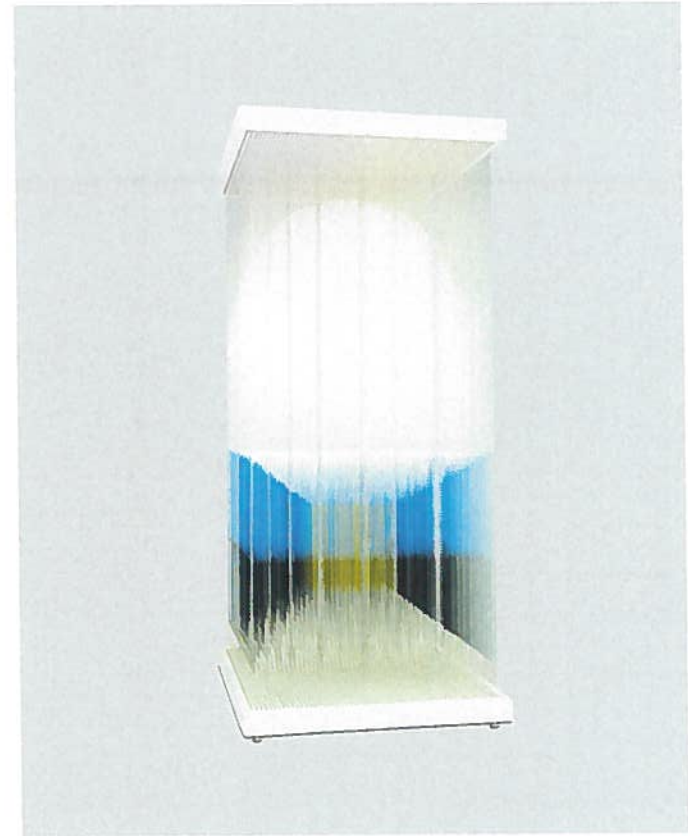
OVOIDE NARANJA, 1997
260 x 210 x 134 cm



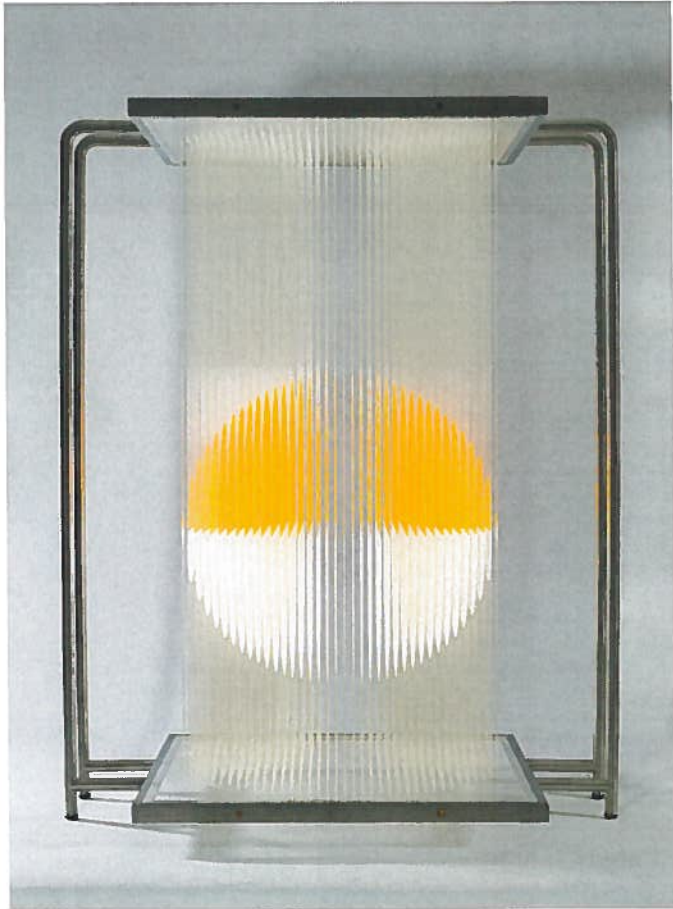
ESFERA AMARILLA, 2004
260x 211 x 211 cm



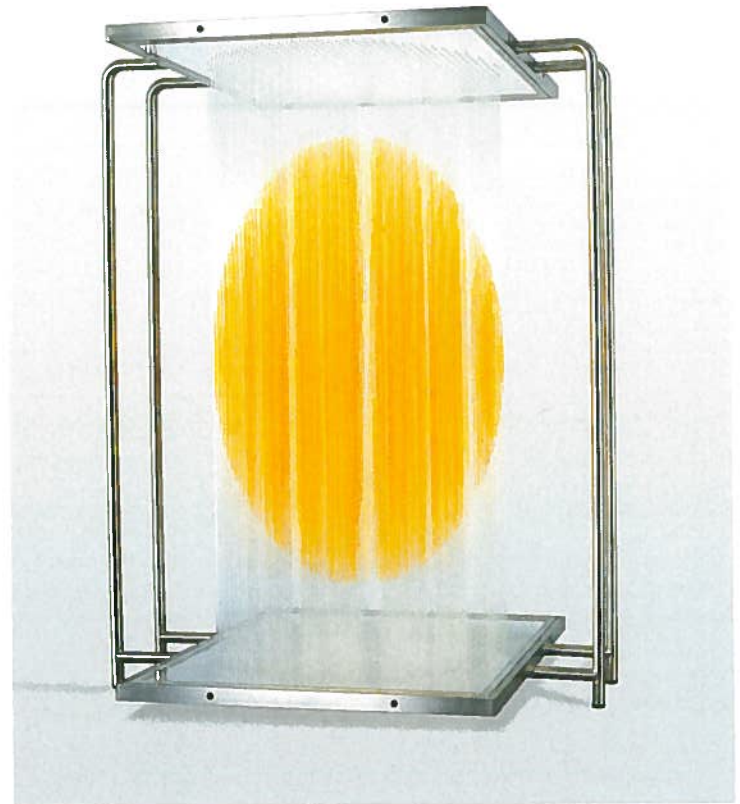
SPHÈRE BLEUE DE PARIS, 2000
260 x 212 x 212 cm



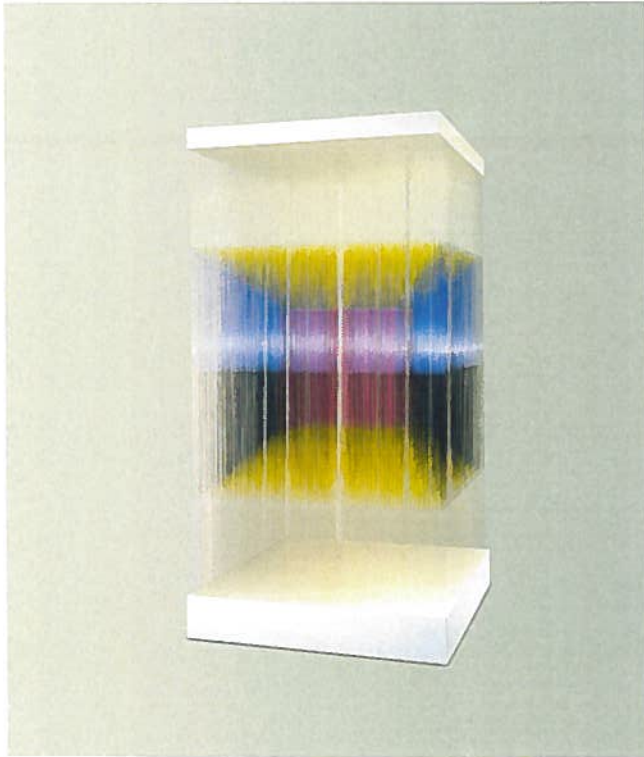
CUBO ESFERA, 2003
275 121 x 152 cm



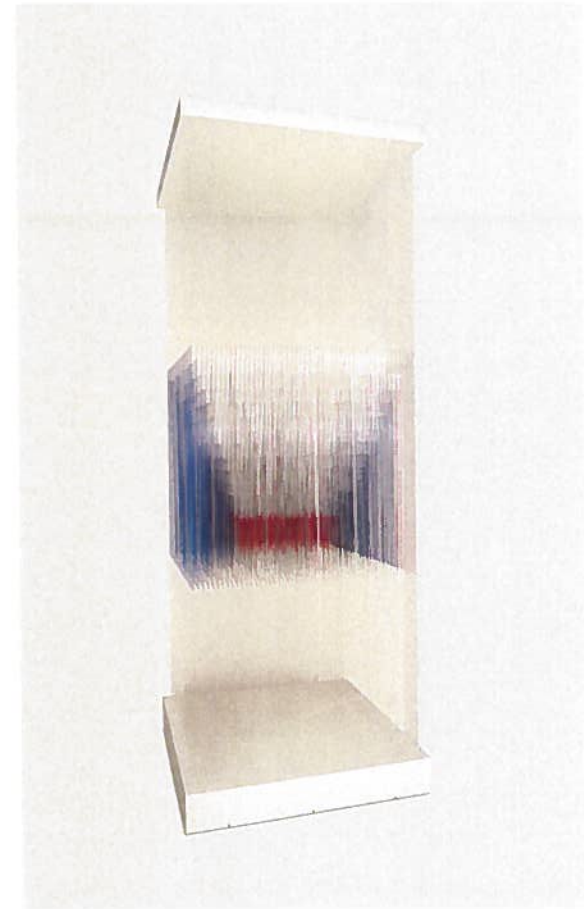
ESFERA MEDIANA AMARILLA Y BLANCA, 2004
100 x 80 x 56 cm



OVOIDE MEDIANO AMARILLO, 2004
100 x 80 x 56 cm



CUBO POLICROMO, 1997
240 x 120 x 120 cm



CUBO DE SEUL, 1994
300 x 120 x 120 cm





