



Untitled, 2012
Oil on canvas / Huile sur toile, 76 1/2 x 102 1/2 inches (in 2 panels) / 194 x 260,6 cm (en 2 panneaux) Photo: Ikuhiro Watanabe. Courtesy Galerie Perrotin

IZUMI KATO

Galerie Perrotin, Paris / June 12 - July 26, 2014

Press preview: Thursday June 12, 10am-12pm

Galerie Perrotin is pleased to present the first solo exhibition in Paris by Japanese artist Izumi Kato, gathering a selection of recent paintings, drawings and sculptures.

Children with disturbing faces, embryos with fully developed limbs or ancestor spirits locked up in bodies with imprecise forms – the creatures summoned by Izumi Kato are as fascinating as they are enigmatic. Their anonymous silhouettes and strange faces with absent features are above all simple forms and strong colours. Their elementary representation, an oval head with two big, fathomlessly deep eyes shows no more than a crudely figured nose and mouth. Bringing to mind primitive arts, their expressions evoke totems and the animist belief that a spiritual force runs through living and mineral worlds alike. The aura that they exude seems to manifest the first movement of life while the intensity of their expression gives us access to a knowledge of man founded less on reason than on intuition. Embodying a primal, universal form of humanity, these magical beings invite viewers to identify themselves as if looking in a mirror.

Kato uses rubber spatulas to paint the motifs and swathes of colour for his grounds. He also uses his fingers, clad in vinyl gloves, to trace the fragile contours of his figures. For Kato, painting is an extra-natural form of expression that competes with the real world and allows him to create a separate universe in which the imaginary matters as much as reality. In Kato's work, where ancient and modern times merge, as do intuition and intellect, body and mind are joined in the fluctuating forms and bursts of colour that punctuate these mysteriously human forms. The same goes for his sculptures, originally carved in wood

IZUMI KATO

Galerie Perrotin, Paris / 12 juin - 26 juillet 2014

Vernissage presse: jeudi 12 juin, 10h-12h

La Galerie Perrotin est heureuse de présenter la première exposition personnelle de l'artiste japonais Izumi Kato à Paris, réunissant ses peintures, dessins et sculptures récentes.

Enfants aux visages inquiétants, embryons aux membres déjà développés ou esprits ancestraux enfermés dans des corps aux formes imprécises, les créatures d'Izumi Kato sont aussi fascinantes qu'énigmatiques. Leurs silhouettes anonymes et leurs visages étranges aux traits absents, figurent avant tout des formes simples et des couleurs fortes. Leur représentation élémentaire - une tête ovale, percée de deux grands yeux aux profondeurs abyssales, ne laisse apparaître qu'un nez et une bouche grossièrement figurés - peut faire songer aux arts premiers, et leur expression évoquer l'animisme, cette croyance qu'une seule force anime tous les êtres, vivants ou minéraux. L'aura qu'ils dégagent semble ainsi rendre manifeste les premiers mouvements de la vie, et l'intensité de leurs expressions nous autoriser à accéder à un degré de connaissance de l'homme moins fondé sur la raison que sur l'intuition. Incarnant une forme originelle et universelle d'humanité, ces êtres magiques invite le spectateur à se reconnaître en eux comme dans un miroir.

Izumi Kato emploie des spatules en caoutchouc pour peindre les motifs et aplats de couleurs de ses arrière-plans, et s'aide également de ses doigts, enfermés dans des gants de vinyle, pour tracer les contours évanescents de ses personnages. Chez Izumi Kato, la peinture est une forme d'expression extranaturelle qui concurrence le monde réel et autorise l'artiste à créer un univers à part dans lequel l'imaginaire importe autant que la réalité. Dans le monde d'Izumi Kato,

but here, for the first time, made from supple plastic, a material that allows the artist to paint, cut and twist as his work progresses. Representing beings that are sometimes alone, sometimes in pairs or groups, reclining, gathering, or simply standing, these creatures whose protuberant eyes draw in the viewer with their silent speech, seem to float in space – naked bodies stuck on supports or simple heads staring at us from a wooden stool, inviting us to interact with them. The colour and crude elementary forms of the material manifest our bond to earth and to nature, but also, by the quality of their plasticity, our inscription in today's world. The refuges of spirits whose chiseled and painted expressions remain ambiguous, serve as a medium for the beholder to explore his or her own instincts.

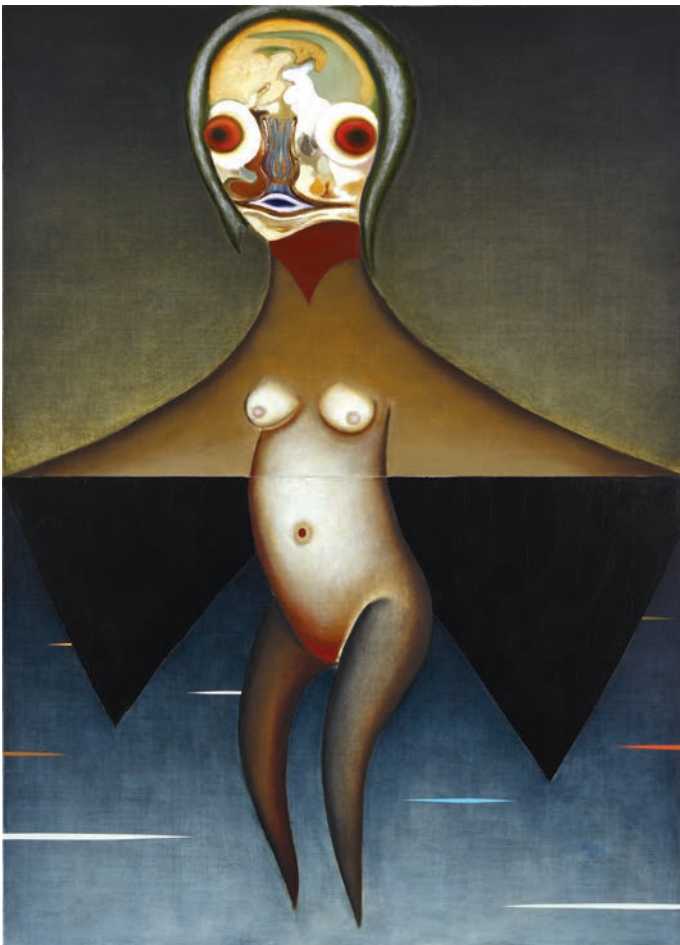
Going beyond the classic opposition between abstraction and figuration, symbolism and realism, Kato finds the simple features of primitive, ancestral arts in the forms of contemporary art by creating modern fetishes capable of linking us to our deep, universal nature, and at the same time to our deepest individual emotions. Thus the singular evolution of his figures reproduces that of art itself, by following, not time's straight arrow, but the closed loop of the cycle of life, uniting ages and souls in the human condition.

Izumi Kato was born in 1969, in Shimane, Japan. He graduated from the Department of Oil Painting at Musashino University in 1992. He now lives and works in Tokyo. Since 2000's, Kato has garnered attention as an innovative artist through exhibitions held in Japan and across the world. In 2007, he was invited to the 52nd Venice Biennale International Exhibition, curated by Robert Storr.

où se mêlent âges anciens et modernes, intuition et intellect, le corps et l'esprit sont réunis par les formes fluctuantes et les éclats de couleurs qui ponctuent ces êtres mystérieusement humains. Il en va de même pour ses sculptures, d'abord taillées dans le bois et réalisées ici pour la première fois, en plastique souple, un matériau qui autorise l'artiste à peindre, couper et tordre à mesure qu'il crée. Représentant des êtres tantôt seuls, tantôt en couple ou à plusieurs, allongés et réunis, ou simplement debout, ces créatures dont les yeux proéminents attrapent le spectateur pour lui parler silencieusement, semblent flotter dans l'espace, corps nus plantés sur des supports, ou simple tête nous fixant de son tabouret de bois, pour nous inviter à interagir avec eux. La matière manifeste par sa couleur, ses formes brutes et élémentaires, notre lien à la terre et la nature, mais aussi, par le plastique, notre inscription dans le monde d'aujourd'hui. Refuge d'esprits dont les expressions, taillées et peintes, restent ambiguës, elles s'offrent au spectateur pour le laisser explorer ses propres instincts face à elles.

Dépassant l'opposition classique entre abstraction et figuration, symbolisme et réalisme, Izumi Kato fond les traits stylisés des arts primitifs et ancestraux dans les formes de l'art contemporain en créant des fétiches modernes capables de nous relier, en même temps, à notre nature profonde et universelle, et à nos émotions individuelles et intimes. Ainsi l'évolution singulière de ses personnages reproduit-elle celle de l'art en suivant, non l'uniforme flèche du temps, mais la boucle fermée du cycle de la vie pour réunir les âges et les âmes dans l'humaine condition.

Izumi Kato est né en 1969, dans la région de Shimane, au Japon. Il est diplômé du département de peinture de l'Université Musashino en 1992. Il vit et travaille à Tokyo. Depuis 2000, Kato s'est fait remarquer lors d'expositions organisées au Japon et à travers le monde. Il a notamment été invité, en 2007, à la 52e Biennale de Venise (commissaire Robert Storr).



Untitled, 2014
Huile sur toile / Oil on canvas
224 x 162 cm (en 2 panneaux) / 88 1/4 x 63 3/4 inches (in 2 panels)
Photo: Ikuhiro Watanabe
Courtesy Galerie Perrotin

Press Contacts

Constance Gounod, Head of Press & Communication, constance@perrotin.com +33 1 84 17 64 37
Armelle Bellenger, Press Officer, armelle@perrotin.com +33 1 76 21 07 11

Izumi Kato was born in 1969, Shimane, Japan. He graduated from the Department of Oil painting Musashino Art University.

SOLO EXHIBITIONS (Selection)

- 2014** Galerie Perrotin, Hong Kong
- 2012** "SOUL UNION DELUXE" Kirishima Open – Air Museum, Kagoshima, Japan
- 2011** "The View from After", COMME des GARÇONS OSAKA (Six), Osaka, Japan
"Paintings and Sculptures", ARATANIURANO, Tokyo, Japan
- 2010** "Izumi Kato - Journeying into Each Day", The Hakone Open-Air Museum, Kanagawa, Japan
"SOUL UNION" ARATANIURANO, Tokyo, Japan
- 2008** "The Riverhead" The Ueno Royal Museum Gallery, Tokyo, Japan
- 2007** "Dear Humans" ARATANIURANO, Tokyo, Japan
"MOKU" Takahashi Collection, Tokyo, Japan
- 2006** Murata & Friends Berlin, Germany ('04,'01)
- 2005** "HADAKA NO HITO" SCAI THE BATHHOUSE, Tokyo, Japan
Galleria Enrico Astuni, Pietrasanta, Italy
- 2004** "αM PROJECT Vol.5" ASK? Art space kimura, Tokyo, Japan
- 2003** Ai Gallery, Tokyo, Japan ('01,'00,'95)
23GALLERY, Tokyo, Japan ('01,'00)
- 2002** Galleria Chimera, Tokyo, Japan
- 2001** "Criterium 46 – Izumi Kato" Contemporary Art Gallery, Art Tower Mito, Ibaraki, Japan
- 1999** "SAMAZAMA NA ME 98 Izumi Kato" IBM-KAWASAKI City Gallery, Kanagawa, Japan
- 1996** GALLERY LE DECO, Tokyo, Japan ('97, '98)

GROUP EXHIBITIONS (Selection)

- 2013** "VISCERAL SENSATION – Voices So Far, So Near" Museum of Art, 21st Century Museum of Contemporary Art, Kanazawa, Ishikawa, Japan; "Wonderful My Art – Selected aerists from Takahashi Collection" Kawaguchiko Museum of Art, Yamanashi, Japan; "Re:Quest – Japanese Contemporary Art since the 1970s" Museum of Art, Seoul National University, Seoul, Korea; "MISUGOSHITEKITAMONO" Sendai Mediatheque, Miyagi, Japan
- 2012** "Parallel Japanese Worlds" A4 Contemporary Arts Center, Chengdu, China; "Rokko Meets Art 2012" Mount Rokko National Park, Hyogo, Japan; "the Allure of the Collection" The National Museum of Art, Osaka, Japan; "Double Vision : Contemporary Art from Japan" Municipal Museum of Modern Art, Moscow, Russia (traveled to Haifa Museum of Art, Tikotin Museum of Japanese Art, Israel)
- 2011** "JARAPAGOS" Mitsubishi-jisho ARTIUM, Fukuoka, Japan; "MOT Collection Silent narrator : on plural stories" Museum of Contemporary Art, Tokyo, Japan; "Taguchi Art Collection GLOBAL NEW ART" SOMPO JAPAN MUSEUM OF ART, Tokyo, Japan; "The Most Requested Top 30/10 Years of Takahashi Collection Hinode" TABLOID GALLERY, Tokyo, Japan; "Be Alive – Selections from the Hara Museum Collection" Hara Museum of Contemporary Art, Tokyo, Japan; "Art in an Office – from Impressionism, Modern Japanese Art to Contemporary Art" Toyota Municipal Museum of Art, Aichi, Japan
- 2010** "Living With Art – Contemporary Art From Japan and Taiwan", Yi&C.Contemporary Art, Taiwan; "New Kore Shizuoka – New and Previous Collections and Art Closely Connected to Shizuoka" Shizuoka Prefectural Museum of Art, Shizuoka, Japan; "Garden of Painting / Japanese Art of the 00s" The National Museum of Art, Osaka, Japan
- 2009** "Being Seeing Feeling – Selection from the Hara Museum Collection" Hara Museum ARC, Gunma, Japan; "Dorodoro, Doron – The Uncanny World in Folk and Contemporary Art in Asia" Hiroshima City Museum of Contemporary Art, Hiroshima, Japan; "Long Season" Michael Ku Gallery, Taipei, Taiwan; "TOYOTA ART COLLECTION 2008" Kuragaika Art Salon, Kuragaika Commemorative Hall, Aichi, Japan
- 2008** "FORWARDS 08 – Daimler Awards for Contemporary Art from Germany, Japan, South Africa and the USA" Daimler Contemporary, Berlin, Germany; "Kankai Pavilion Opening Exhibition – Beyond Time, Beyond Space" (supervised by Arata ISOZAKI), Hara Museum ARC, Gunma, Japan; "neoteny japan – From TAKAHASHI Collection" Kirishima Open- Air Museum, Kagoshima, Japan (traveled to Museum of Contemporary Art, Sapporo, Hokkaido ; '09 Ueno Royal Museum, Tokyo ; Niigata Prefectural Museum of Modern Art, Niigata ; Akita Museum of Modern Art, Akita ; Yonago City Museum of Art, Tottori ; '10 The Museum of Art Ehime, Ehime, Japan); "Art Scope 2007/2008 – Faces of Existence" Hara Museum of Contemporary Art, Tokyo, Japan; "Selection from the Hara Museum's Permanent Collection" Hara Museum of Contemporary Art, Tokyo, Japan
- 2007** "Venice Biennale 52nd International Art Exhibition "Think with the Senses – Feel with the Mind. Art in the Present Tense" Italian Pavilion at Giardini Venezia, Italy; "Painting as Forest : Artist as Thinker" Okazaki Mindscape Museum, Aichi, Japan; "MOT Anneal 2007 – From a World as Lange as Life" Museum of Contemporary Art Tokyo, Japan
- 2006** "The Child" Toyota Municipal Museum of Art, Aichi, Japan
- 2005** "GLOBAL PLAYERS – Deutsche und japanische Kunst der Gegenwart" BankART1929, Yokohama, Japan ('06 traveled to Ludwig Forum Aachen, Germany); "Little Boy, Japan Society" New York, U.S.A. ; "Izumi KATO, Junya SATO, Yuken TERUYA" Galerie 14-1, Stuttgart, Germany
- 2004** Galleria Enrico Astuni, Pietrasanta, Italy; "lonely planet" Contemporary Art Gallery, Art Tower Mito, Ibaraki, Japan; "Body" Galerie Robert Dress, Hannover, Germany
- 2003** "ZONE – Clairvoyants in this threatening age" Fuchu Art Museum, Tokyo, Japan; "The 1st Magical Art Exhibition" Magic Room, PROJECT ROOM, Tokyo, Japan
- 2002** "Pro Tsubo, Zeitgenassische junge Kunst aus Japan" Theodor-Zink-Museum, Kaiserslautern, Germany ('04 traveled to Neue Galerie Landshut, Germany); "VOCA 2002", Ueno Royal Museum, Tokyo, Japan
- 2000** "Four Emaerging Artists" Theatres des SENS, Tokyo, Japan
- 1997** "'Bi' and 'Jutsu'" Ai Gallery, Tokyo, Japan